

Port of Palm Beach waives wharfage fees for Haitian earthquake relief

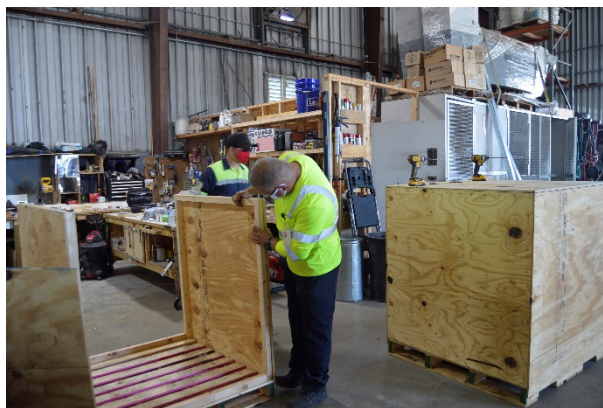
Riviera Beach, Florida – August 20, 2021 – At Thursday’s, Regular Board of Commissioners Meeting, Port of Palm Beach Commissioners approved Executive Director Manuel Almira’s request to waive wharfage* charges for relief cargo being shipped to Haiti. The move comes less than a week after a deadly earthquake claimed more than 2,000 lives.

“Our thoughts are with the survivors of the earthquake and the people who have lost loved ones during this unexpected disaster,” said Port Executive Director Manuel Almira.

The Port of Palm Beach is working closely with long-time Port tenant Teeters Agency and Stevedoring and Port user Monarch Shipping to assist them with their efforts in providing relief to our neighbors in the Caribbean.

On Thursday, Monarch Shipping began collecting donated goods such as clothing, hygiene products, tents, tarps and food at its Port located receiving office located at 270 N Dr. Martin Luther King Jr. Blvd. Riviera Beach, FL.

The companies are looking to fill two crates that were built and donated by our Port of Palm Beach maintenance and facilities team.



“The people in Haiti are suffering in ways we cannot imagine. Waiving wharfage fees is our way of showing the local Haitian community and the survivors of the earthquake that we will support them anyway we can,” said Board Chairman Joseph Anderson.

Local pastor Reverend Francis Bruno said during Thursday's Board meeting he is working directly with our tenants to ensure the relief supplies get to people in the affected areas.

The waiver will be in effect until December 31, 2021.

The last time the Port of Palm Beach waived wharfage charges for humanitarian relief supplies to Haiti was in October 2016 when the island was impacted by hurricane Matthew.

About Port of Palm Beach

Located in Riviera Beach, the Port of Palm Beach is a full-service, diversified port, offering cruise and cargo services to more than 30 onsite tenants and users. At 162 acres, the Port's efficiency is unparalleled, processing more than \$7 billion in commodities, 2.5 million tons of cargo, and 500,000 cruise passengers annually. As one of the largest employers in Palm Beach County, the Port of Palm Beach and its tenants employ more than 2,850 people. Through the contribution of more than \$185 million in business revenue and \$17.5 million in tenant-contributed state and local annual tax revenue, the Port of Palm Beach is a large economic engine in South Florida. For more information, visit www.portofpalmbeach.com.

About Monarch Shipping Company

Privately owned company in the Bahamas and operates in South Florida. Since 1994, Monarch Shipping Company has been dedicated to providing an outstanding service that is incomparable to others. We own and operate several RORO ships that have no need for shore cranes and equipment. As a RORO vessel operation, all cargo is driven on and off the ships which greatly reduces safety hazards and damages to cargo. We employ only the most experienced and safest operators, not only the safety for others but cargo handling as well.. We have the equipment and operators that can handle any type or condition of cargo. Phone number: 561-845-7590

Teeter Agency & Stevedoring

The company is a full service Stevedoring and Agency Company capable of handling container and general cargo vessels on a daily basis. The family-owned company that's been operating in Palm Beach County since 1964 is the general agents for Monarch Shipping Co. Ltd. The company's equipment encompasses two 150 tons shore cranes, 9 forklifts from 2.5 to 25 tons, one container lift of 45 tons, as well as seven mules and access to sufficient chassis and flatbed trailers to handle any number of containers and cargo within the port area. Phone number: 561-845-8330.

1. Wharfage is a charge assessed against the cargo or vessel on all cargo passing or conveyed over, onto, or under Port Facilities or between vessels (to or from barge, lighter, or water), when berthed at wharf or when moored in slip adjacent to wharf. Charges for Wharfage do not include charges for any other service.